

# Software: SimVSM

**The app for value stream mapping & simulation - paperless, fast, simple.**

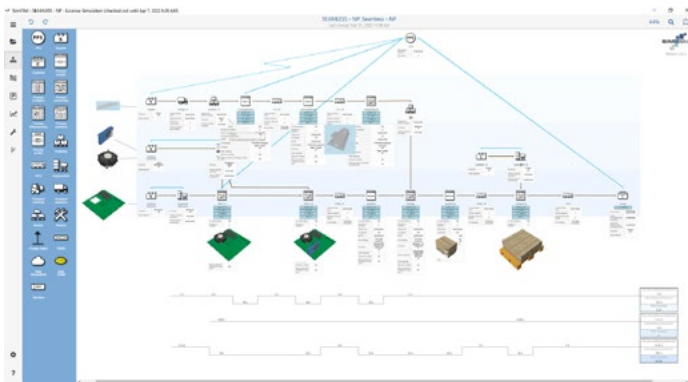
With SimVSM you capture your value stream by drag & drop on a mobile device (tablet) or in a desktop application. Create alternative modeling variants quickly and easily and analyze your digitized value stream already during modeling with static KPIs.

Transfer your value stream model to your simulation server via web service and receive not only evaluations but also dynamic simulation results in a short time.

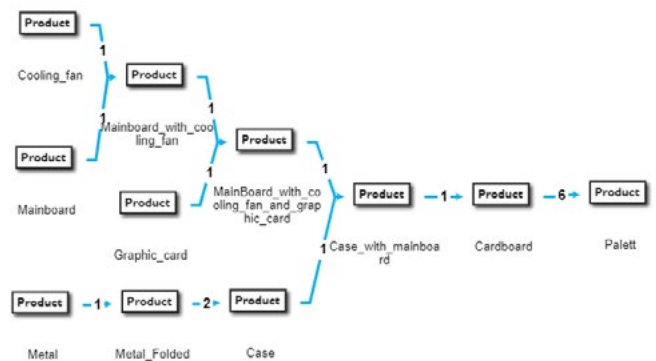
Benefit from the end-to-end digital workflow for modeling, sharing projects as well as evaluation, with all necessary information in one place.

You can also expand your value stream documentation with stored images or measurement series, among other things.

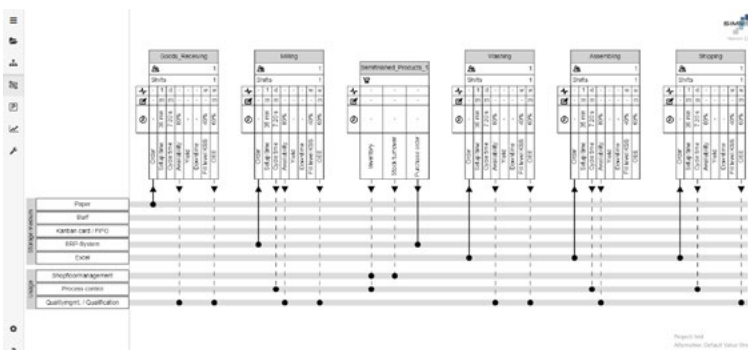
**Capture, document, simulate and analyze value streams on the move.**



SimVSM Modeling interface



Bill of materials (BOM)

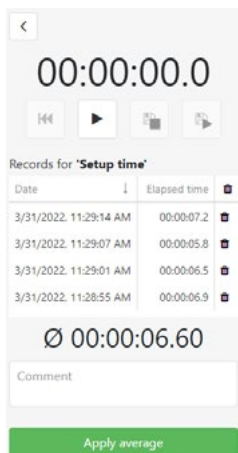


Value Stream 4.0 Swimlane Diagram

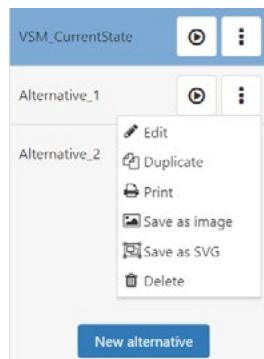
Model advanced information flows with Swimlane mapping for Value Stream 4.0.

Unused potential can be visualized in this way, especially for digitization projects.

Time parameters with stopwatch and measurement series



Alternatives management



Simulation results include, among others, dynamic process states and product-related buffer stocks over time



**SimVSM provides you with an integrated approach to modeling, exchanging and analyzing value streams in one app.**

**SimVSM is available free of charge for iOS, Windows and Android (in-app purchases available).**

If you are interested in the **SimVSM PRO** version after the first test, please contact us. With SimVSM PRO, among other things, the connection to a simulation model via web service is possible (requires a license of the simulation software).

In addition, functions for user authentication and project exchange are enable by the backend server.



**We would be pleased to convince you of the advantages of our so far unique app for your value stream mapping!**

**Free Download**

**[iTunes App Store](#)**



**[Microsoft Store](#)**



**[Google Play](#)**



**Feel free to contact us**

**SimPlan AG**

Sophie-Scholl-Platz 6 | 63452 Hanau

Telephone: +49 6181 40296-0

**info@SimPlan.de | www.SimPlan.de**